

PROJECT NAME:

FILE # TS\_DS\_RADIUS COUPLING GRATE\_ADA



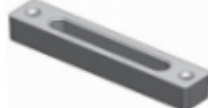
## TECHNICAL SPECIFICATION



DS-221MG



DS-226MG



DS-232MG



DS-681LGMG

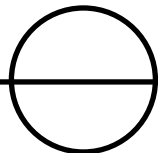


DS-660MG—DS665MG

PART NUMBER	COLOR	MATERIAL	SIZE	LOAD CLASS	OPEN AREA FLOW RATE W/ 1/2" HEAD	WEIGHT (LBS)	ADA	HEEL PROOF
DS-221MG	STEEL	GALV. STEEL	6" X 1.25"	C	1.31 IN <sup>2</sup> / LINEAR FOOT - 4.01GPM / LF	0.33	NO	NO
DS-226MG	STAINLESS STEEL	STAINLESS STEEL	6" X 1.25"	A	0.86 IN <sup>2</sup> / LINEAR FOOT - 2.63 GPM / LF	0.33	YES	YES
DS-232MG	BLACK	DUCTILE IRON	6" X 1.25"	D	1.88 IN <sup>2</sup> / LINEAR FOOT - 5.75 GPM / LF	0.93	YES	NO
DS-660MG	WHITE	STRUCT. FOAM POLYOLEFIN	6" X 1.25"	B	1.88 IN <sup>2</sup> / LINEAR FOOT - 5.75 GPM / LF	0.08	YES	NO
DS-661LGMG	GRAY	STRUCT. FOAM POLYOLEFIN	6" X 1.25"	B	1.88 IN <sup>2</sup> / LINEAR FOOT - 5.75 GPM / LF	0.08	YES	NO
DS-661MG	DARK GRAY	STRUCT. FOAM POLYOLEFIN	6" X 1.25"	B	1.88 IN <sup>2</sup> / LINEAR FOOT - 5.75 GPM / LF	0.08	YES	NO
DS-662MG	GREEN	STRUCT. FOAM POLYOLEFIN	6" X 1.25"	B	1.88 IN <sup>2</sup> / LINEAR FOOT - 5.75 GPM / LF	0.08	YES	NO
DS-663MG	BLACK	STRUCT. FOAM POLYOLEFIN	6" X 1.25"	B	1.88 IN <sup>2</sup> / LINEAR FOOT - 5.75 GPM / LF	0.08	YES	NO
DS-664MG	SAND	STRUCT. FOAM POLYOLEFIN	6" X 1.25"	B	1.88 IN <sup>2</sup> / LINEAR FOOT - 5.75 GPM / LF	0.08	YES	NO
DS-665MG	BRICK RED	STRUCT. FOAM POLYOLEFIN	6" X 1.25"	B	1.88 IN <sup>2</sup> / LINEAR FOOT - 5.75 GPM / LF	0.08	YES	NO
DS-681LGMG	GRAY	STRUCT. FOAM POLYOLEFIN	6" X 1.25"	B	N/A	0.16	YES	YES

### NOTES:

-DESIGNED TO FIT RADIUS COUPLINGS - DSRC, DSRC-097, DSRC-100, DSRC-103 & DSRC-106



## DURA SLOPE GRATE

### RADIUS COUPLING GRATE

FOR PRODUCT ASSISTANCE, CONTACT NDS TECHNICAL SERVICE AT [techservice@ndspro.com](mailto:techservice@ndspro.com), DESIGN ASSISTANCE- [designworx@ndspro.com](mailto:designworx@ndspro.com)  
851 N. HARVARD AVE. LINDSAY, CA 93247 WWW.NDSPRO.COM 1-800-726-1994