

Pro-Spec[®] Series – 17 in. X 30 in. TELECOM Box (326BCBT-BG) Box with Marker Disc (326BCBT-BG-M)

APPLICATION

- Protects critical infrastructure in fiber to the home (FTTH) installations
- Provides easy access for service and maintenance

FEATURES

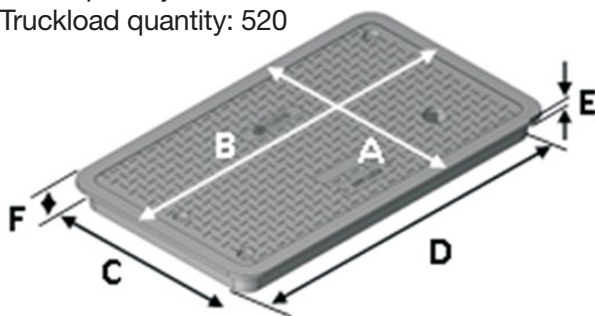
- “TELECOM” marking on cover
- Commercial grade box and cover engineered for heavy-duty use
- Structural support ribs reinforce box for added strength
- Includes 3/8 in.-16 brass nuts and bolts to secure cover
- Available with electronic marker disc (frequency 101.4 kHz) installed on 326BCBT-BG-M

Marker Disc

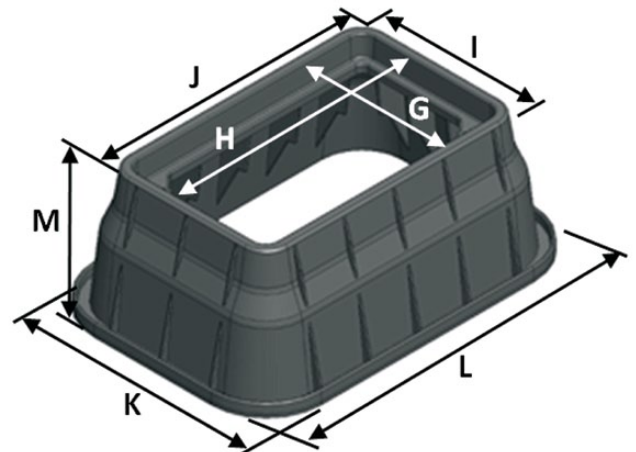
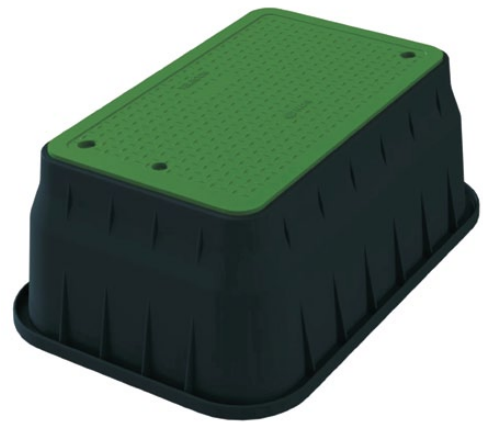


SPECIFICATIONS

- Box material: HDPE
- Cover material: HDPE
- Box weight: 28.45 lbs.
- Cover weight: 13.30 lbs.
- Total weight: 41.75 lbs.
- Load rating: Pedestrian and lawn care equipment
- Pallet quantity: 10
- Truckload quantity: 520



Cover Dimensions (nominal)	
A. Top width	19-1/8 in.
B. Top length	32-1/8 in.
C. Bottom width	17-3/8 in.
D. Bottom length	30-3/8 in.
E. Rim thickness	3/8 in.
F. Overall height	2-1/4 in.



Box Dimensions (nominal)	
G. Top inside width	17-3/4 in.
H. Top inside length	30-3/4 in.
I. Top outside width	20-1/8 in.
J. Top outside length	33-1/4 in.
Bottom inside width	24 in.
Bottom inside length	37-1/8 in.
K. Bottom outside width	27-1/8 in.
L. Bottom outside length	40-1/8 in.
M. Height	18-1/4 in.